

Welcome to Year 4 Morpurgo



Meet the Teacher!

Miss Hafidh

Miss Gibson

Tom – Freestyle Sports (Tuesday)

Mrs Fox / Mr Crisps

Daily Routines

- Classroom doors are opened at 8:45am.
- The children come in, hand up bags/ coats /complete a morning activity (Handwriting or Spelling).
- Register is taken at 8.55am and lessons start at 9am.
- Morning break - 10.45am - 11.00am.
- Fruit or vegetables only for morning snack please.
- We are a water only school.
- Lunchtime from 12.00pm to 1.00pm. Lunches are eaten in the hall.
- End of day routine/collection - please notify school about anyone different picking up.

Timetable

Y4 - Morpurgo Timetable 2022-23					
Session	Monday	Tuesday	Wednesday	Thursday	Friday
08:45 – 08:55	Handwriting Practice	No-Nonsense Spelling Practice	Handwriting Practice	No-Nonsense Spelling Practice	Handwriting Practice
08:55 – 09:00	Registration	Registration	Registration	Registration	Registration
1	Whole School Assembly	Handwriting Input & Practice	PSHE (09:00 – 09:45)	Handwriting Input & Practice	Celebration Assembly
09:00 – 09:30	30 mins	20 mins	45 mins	20 mins	30 mins
2	English	PE (9:20 – 10:45)	English (09:45 – 10:30)	English (09:20 – 10:30)	English
09:30 – 10:30	1 hour		45 mins	1 hour 10 mins	1 hour
3	Arithmetic		Arithmetic	Arithmetic	Arithmetic
10:30 – 10:45	15 mins	1 hour 25 mins	15 mins	15 mins	15 mins
10:45 – 11:00	Break	Break (PPA)	Break	Break	Break
4	Maths	PE (11:00 – 11:35) 35mins Arithmetic	Maths	Maths	Maths
11:00 – 12:00	1 hour	25 mins	1 hour	1 hour	1 hour
12:00 – 13:00	Lunch	Lunch	Lunch	Lunch	Lunch
5	No-Nonsense Spelling Input	RFP	No-Nonsense Spelling Input	No-Nonsense Spelling Input	Languages (13:00 – 13:35)
13:00 – 13:15	15 mins	15 mins	15 mins	15 mins	
6	Science	English	Computing	Humanities	35 mins Music (13:35 – 14:10)
13:15 – 14:10	55 mins	55 mins	55 mins	55 mins	35 mins
7	Science	Maths	Art/DT	Humanities	RE
14:10 – 15:05	55 mins	55 mins	55 mins	55 mins	55 mins
9	Story Time/RFP	Story Time	Story Time/RFP	Story Time/RFP	Story Time/RFP
15:05 – 15:15	10 mins	10 mins	10 mins	10 mins	10 mins
15:15	End of the Day	End of the Day	End of the Day	End of the Day	End of the Day

Uniform

Children should be wearing correct uniform to school.

- Castle Polo shirt
- Grey or black school trousers/skirt/ dress
- Black school shoes
- School jumper

All items need to be clearly named.



PE

PE kit

- Trainers
- White t-shirt
- Black shorts
- Tracksuit bottoms



PE Kit must be in school and children will be changing into their PE kits before their lesson.

No earrings (children must remove themselves). No taping allowed.

If not removed, they will not be able to participate. They will have to sit out and fill in a lesson activity based on their PE unit of work. This also applies if they do not have a PE.

High Expectations

School Rules

- Safe
- Respectful
- Ready

School Values

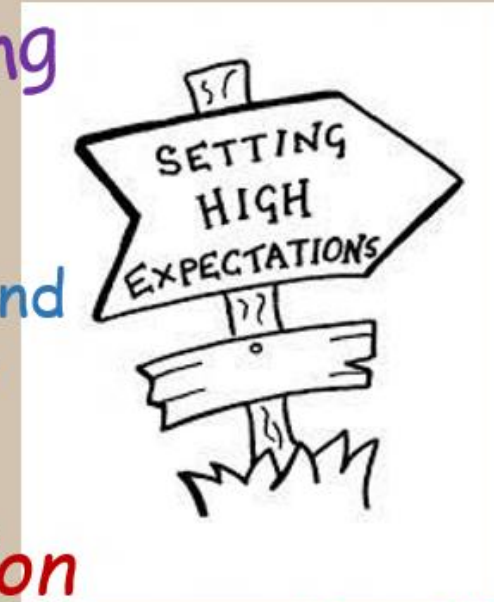
- Hope
- Respect
- Trust
- Collaboration
- Resilience
- Pride

Behaviour

Handwriting

*Attendance and
punctuality*

Presentation



Uniform

Homework completion

High expectations for all in all aspects of school life

123 MAGIC - School behaviour strategy for promoting positive behaviour.

House points, proud cloud, class reward tracks, privileges

Warnings "that is 1, that is 2..."

- "That is 3" = consequence.
- Consequences are personal to the individual child. E.g. missing a part of a playtime or choosing time.

- Immediate 3 (Unacceptable behaviour)**
- Behaviour is recorded and monitored
- Parents contacted and a senior member of staff notified.
- A consequence is given. Immediate 3 letter sent home. Please discuss this with your child. The reply form must be returned to school.



123

Reading



- Reading is vital!
- Reading activities take place in school daily.
- Books and reading journals must be in school every day
- Children must read every day and have their journals signed.
- Please make comments in reading journals.

Homework

Creative

- Homework completion is essential.
- English and maths and spelling - set on a Friday.
- Some homework may be set online - TT Rockstars, Sumdog.
- Homework must be returned to school by the following Thursday.
- Please encourage and support your child.



Maths Methods

- Maths methods taught in each year group vary.
- Methods may be different to the methods you routinely use.
- There will be further information about methods early this term so you can support your children effectively at home.
- If you need help, please ask.



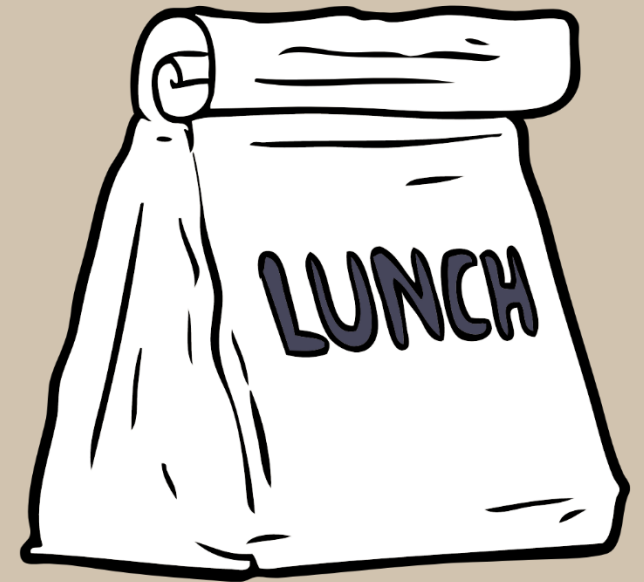
Multiplication Check

- In Year 4, all pupils take the multiplication check.
- It is an online short test that assesses the children's knowledge of their timetables.
- By Year 4, children should know all of their timetables up to their 12 timetables.
- We practise daily within class (each child on their own specific timetable)
- Sumdog allows for Time Tables practise as does TT rockstars.
- Any opportunity to practise is hugely beneficial.



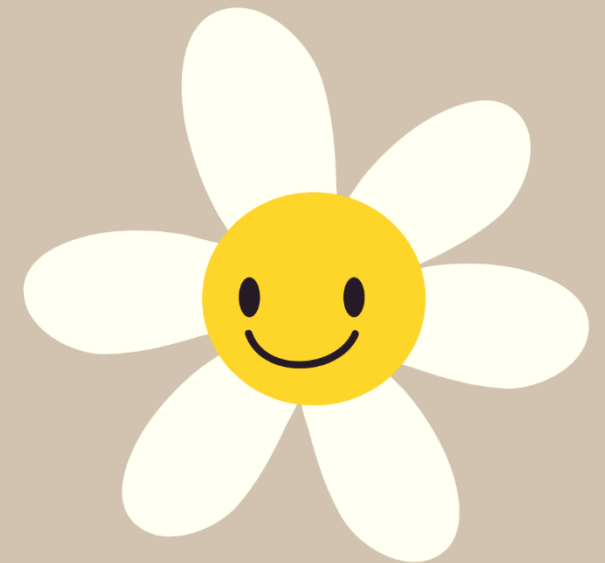
Lunches

- All children should bring a water bottle to school everyday that they can refill throughout the day.
- Children can either have an Aspens lunch or bring a packed lunch.
- If you have any concerns about your children lunch or eating. Please come discuss with me, so we can support you both.
- Lunches should be include a healthy balanced lunch (No nuts please)
- Toys and collectibles cards should not be brought into school for break and lunchtime in case they are lost.



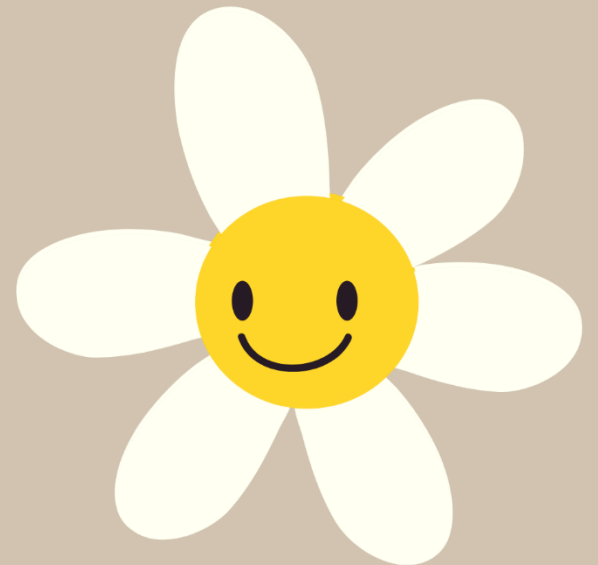
Parent Participation

- Read with children at home
- Support with homework completion
- Ensure children are equipped for each day
- Reinforce expectations
- Keep up to date via the newsletter (mufti days, cake events etc).
- Event attendance



Contact and communication

- Open door policy.
- The class teacher is **always** your first point of contact for any issues or questions.
- Notes in Reading Journals.
- Weekly school newsletters.
- School website.



Any Questions?

Feel free to have a look around

